

Shaping Our Future.



**School of the
Divine Child**

Lavanagh Centre
Ballintemple, Cork



May 2021



"GOING TO MY SCHOOL
MAKES ME FEEL HAPPY.
I DON'T WANT THAT TO
EVER CHANGE."



Contents

Executive Summary	4
A Home For School Of The Divine Child	8
A Win-Win For Our Future	12
Our Story So Far	16
Appendices	24

Video

The School of the Divine Child - in the heart of Ballintemple for over 50 years

↖ [CLICK TO VIEW!](#)



**School of the
Divine Child**
Lavanagh

This "Shaping our Future" report was researched and produced by the Board of Management of School of Divine Child, Lavanagh in Ballintemple, Cork. All the words and opinions are ours alone, shaped by our experience as directors of the school and influenced by our conversations with our teachers, parents and pupils; we felt it was very important that the voices of our pupils were clearly heard.

We thank our teachers and parents for the wonderful photographs. We thank Gráinne of Stori Creative for producing the 2 minute video of our school; it really captures the spirit of our school in Ballintemple. Thank you to Emelie and Ger Fitzgibbon for overseeing the video project. Thank you to Justin and Mick in Niall Keely & Associates, Consulting Engineers for preparing a Plan of our site and producing various Google maps of our neighbourhood highlighting all our local amenities and various sites which will be developed in the short term. And a sincere thank you to Colin and all the team in TOTEM, who brought our core ideas to life into the colourful report you are now reading.

Executive Summary

With a history dating back more than 50 years, The School of the Divine Child is a special school, in a special location. We are a unique and characterful school for pupils between the ages of 4 and 18, who have very complex medical needs and physical disabilities.

Despite their challenges, our children are a constant source of inspiration with their sheer enthusiasm for laughter, life and learning. With our “warrior” pupils, we celebrate success and personal achievements every single day.



OUR SCHOOL IS SPECIAL

Firstly because of our **WONDERFUL STAFF**, who always strive to make each day fun, interesting, and safe for our pupils. Many of our teachers have completed full time diploma courses in special education from St Patrick College, and every member of the team is kind, caring, and patient. Our dedicated SNA's always go the extra mile for our pupils.

Our school is special because it is **MORE THAN A SCHOOL**, and we offer more than just the curriculum. We use assistive and augmentative technologies, music therapy and visual art teaching. We participate in Cork's Lifelong Learning festival, Cork History projects and Film in Schools. Our school is a home from home for our children – a place where they can belong, feel welcomed and accepted. For our pupils, it's their social circle, their friendship hub, a place that challenges them appropriately.

Our school is special because it's **PART OF A WONDERFUL, WELCOMING COMMUNITY**.

For more than 50 years our patient, compassionate neighbours have helped us feel right at home here in Ballintemple. This community plays an important part in the wellbeing of our children. It's a smile and a wave. It's patience when buying a stamp, sharing knowledge of the best toppings for a local pizza, sharing joy when buying a 99 from the ice cream van. It's joining in with our neighborhood St Patrick's day parade, or tucking into our homemade cakes at the Christmas concert. It's helping to keep our gardens and classrooms well maintained.

BALLINTEMPLE IS MORE THAN JUST A LOCATION FOR OUR SCHOOL, IT'S HOME.



A HOME IN The COMMUNITY

We are a part of this community.

We love going to see games at Páirc Uí Chaoimh. We appreciate our neighbours when they let us pet their friendly dogs, or slow down their cars for us to cross the road. We can't wait to enjoy the new wheelchair-friendly Marina Park.

THIS COMMUNITY HAS EMBRACED AND WELCOMED US WITH OPEN ARMS.

Enable Ireland did offer us a new site in their Curraheen facilities, but it's not just as simple as packing our things into a box and moving on. The proposed location is not part of a local community for us. We don't know if these new buildings would be connected to Enable Ireland, or whether our pupils would have to go outside in winter weather to access services. It's so important that our school has an identity, a tradition, but most importantly, a safe, welcoming environment. An environment that feels like home. We have all of this already, right here in Ballintemple.

A WIN-WIN FUTURE

We want to imagine a bright future where we stay in the same area, revamping the school with new state-of-the-art facilities.

THERE IS A "WIN-WIN" SITUATION POSSIBLE FOR EVERYONE INVOLVED

Especially for our wonderful teachers, our dedicated SNA's and, most importantly, our warrior pupils and their families.

Our school is situated on a 2 acre site, in the middle of a large residential area and connected to all essential services. The site offers comfort and convenience, close to bus stops and beautiful walkways, adjacent to the Marina walk and the River Lee.



NEW SOLUTIONS

We want the very best for our pupils.

They deserve the very best. They all face their own unique challenges, and overcome them every single day, come rain or shine. These can be small things that the rest of us might take for granted. Things most people might never give a second thought to. Our location here in Ballintemple facilitates every step of this journey, and any move has the potential to greatly disrupt and derail the children's progress.

ALL THE PARENTS, WHO ARE A BIG PART OF THE VOICES AND VIEWS OF OUR PUPILS, WANT TO STAY IN THIS AREA.

All the families, teachers and support staff want to stay in this area. With all the new plans in place for Ballintemple, we see the potential for further community involvement from our school. We can do more. We want to partner more with neighbouring schools and sports clubs, we want local ambassadors to promote our school. We want to build upon our links with UCC, and be the venue of choice for all special educational degrees. Why not have a special Paralympics team? For our warrior children, the sky is the limit.

WORKING TOGETHER

We want to remain in the Ballintemple neighbourhood where we have so many amenities on hand and where the community make us feel so welcome. We want a new school building that can last for another 50 years but will also offer all the newest technology supports to our pupils.

We want to co-operate and work with the Dept of Education, Enable Ireland, Cork City Council, Our Patron and our neighbours to provide this new type of school. We acknowledge that we are a tenant with a long term lease and there must be solutions where we can realise some significant funds for Enable Ireland for their new development in Curraheen, the site has a potential value of €2 million. We want to have better access to the new public park which is literally "down the road" from us. We want to Shape our Future.

THE IMPORTANT MESSAGE TO REMEMBER, OF COURSE, IS THAT THE PEOPLE WITH THE BIGGEST STAKE IN THIS SCHOOL ARE THE CHILDREN THEMSELVES.



A Home For School Of The Divine Child

For so many reasons, the site here in Lavanagh Ballintemple really feels like home for our school. Although certain parties are keen for us to pack up and move, it isn't quite as simple as that. Our school is more than bricks and mortar. Whilst we have entertained the idea of moving in the past, we need to put the children first, and the best home for them, and for our school, is right here in Ballintemple.



We have discussed moving for more than a decade. The prospect of rejuvenating our current site seems the best possible outcome for our School community.

The Consultation

In 2013, Enable Ireland informed the Board of Management of their purchase of the site in Curraheen and extended an invitation to us to move there with them. We were initially excited at the prospect of a new building on a greenfield site as we had been disappointed not to deliver on plans developed three years before.

We met with Enable Ireland and its architect and, despite some reservations about their original drawings, we continued to discuss and offer options for additions to the site in Curraheen. Most importantly, we asked whether or not our pupils would benefit from the move.

Our Concerns

To our disappointment, our proposed school location had moved further away from the children's services building, and was instead now positioned next to the motorway. We knew straight away that the constant noise from the traffic would be a huge issue for both teaching and learning. We were also very concerned at the lack of community on this development.

We were concerned by the fact that the school did not own any transport, and would need to hire buses or taxis every time we needed to leave. We were also disappointed that parents would not have dedicated parking when visiting our school, and that pupils would have to cross an open car park in winter weather when attending appointments or accessing the dedicated hydrotherapy pool. This itself is also much smaller than the swimming pool in Ballintemple.

The decision was made to remain in Ballintemple, and the Board of Management informed the Patron, Bishop of Cork and Ross; the Building Unit, Department of Education & Skills and Enable Ireland.

On more than one occasion, the Patron and various other parties made requests for us to revisit our decision. Now, five years after the Board's long and considered deliberations, we engaged again with our parents, staff, pupils and the wider community. That consultation

We know why we made the decision to stay in Ballintemple.

fully supported our original decision. Please see Appendix 1 where we set out our Methodology on ascertaining the views of all our staff, parents and pupils.

Who Did We Consult?

The parents, who took the question seriously, and were very excited at the option of a greenfield site. However, parents also liked the Ballintemple site and the question was raised as to whether the prospect of building a new school from the ground up offered the opportunity to provide more bathrooms, better hoist facilities and heating that worked.

"Why not?" They asked. "After all, the school is on the building list."

Parents were delighted to hear that, despite a pandemic, our heating had been fixed, that Wifi was now available throughout the school and that changes had been made to the personal care area, as well as more hoists installed. They also asked if the swimming pool could be reopened, as it was a vital resource for their children.

The staff, both new and long-term members considered the options in a series of focus group meetings. All staff members voted to remain in Ballintemple, some pointing out that the decision made in 2016 had proved to be the right decision for the School. We noted that access to the village of Ballintemple and the new Marina Park made the site in Ballintemple extremely attractive.

The pupils, most of whom are too young to remember the last consultation, were delighted to be asked. They told us that they love the location of our school for its outdoor spaces and the walks they can do. One even mentioned that it was important to have a shop nearby in case he ever forgot his lunch!

The Outcome

Our consultation demonstrated to the Board of Management that our original decision to remain in Ballintemple is shared by staff, students, families and locals alike. This time around we've been given a 'wish list' by those who were consulted.

The first item on this list is to plan for a new school building on the existing site in Ballintemple. In addition, look to Enable Ireland/HSE/Department of Education in order to build a separate administrative building with space to provide training/upskilling for existing staff and student teachers, SNAs, Therapists and Nurses. This could also be an assistive technology hub.

Our short term vision is to:

- Reinstate the swimming pool and add a coffee dock.
- Review the condition of the School and renovate where necessary so the School can function in the short term

The locals, who want us to stay, said they are proud of our school, and consider us a part of the community.





"I love my classroom
and learning with my
teacher and friends."

A Win–Win For Our Future

Our pupils and teachers love our home here as part of the community in Ballintemple. It's a neighbourhood at the start of an exciting new rejuvenation, and our school definitely has a part to play in the area's future.





Plans For The Area

These are not just aspirational plans. They are already under way.

Páirc Uí Chaoimh was completely rebuilt, with a new all-weather pitch on the Ballintemple side of the stadium and affords entertainment for our pupils when they get an opportunity to watch a match there. The removal of the wall has opened up a new world of wonder for our students.

Cork City Council are currently building a new public park nearby in Ballintemple. Our staff and pupils are all very excited by the new community shed, the new footbridges, as well as all the new trees and planting. The Council have also announced further phases of this development, with exciting new plans for the Marina walk from Páirc Uí Chaoimh to Blackrock Village, and up to the city via Monahan road.

The area between our school, the Marina and the river Lee has been underdeveloped over the last 80 years, due to not having access to a main sewer. In the past, the developments on Monahan Road were all low density and used for industries such as coalyards. However, in 2003, a brand new sewage and waterworks scheme was built as part of the Cork drainage scheme. This means the area can now be developed with different ideas and a fresh new vision.

Some of these sites have already secured planning permission for significant developments for new housing and shops. Glenveagh Properties Ltd recently received full planning permission for 1,002 residential units on the old Ford site, built across 12 blocks, varying from 4 to 14 storeys in height.

Bord na Móna have recently advertised they are to sell the 2 acre Suttons coalyard site at the end of Monahan road, very near our school. Cork Warehousing's 2 acre site opposite the Ford site was bought by the Comer Brothers of Galway, 3 warehouses were demolished and this area is now available for development. The Comer Brothers have also purchased the former Tedcastle coalyard fronting the river between ESB and Shandon Boat Club. All these developers have the capital and the know-how to develop these sites.

Ballintemple is now at a very exciting stage of development, and it makes a lot of sense to consider our 2 acre site with others ensuring that any new development accommodates a new school building.

Please see Appendices 3 to 6 on pages 28 to 31 on Various Google maps of the location of all these new proposed developments and various amenities all near to us in our neighbourhood.

The School's Current Condition

Built in 1969 our school is a single storey prefabricated structure, with a design centred around a garden plaza and play area. There are 2 other grassy play areas in the school grounds. Over the years the school has carried out ongoing maintenance and last year a new boiler was installed, and various ceilings and flooring replaced. The structure is functional but basic, and now nearly 50 years old.

The entrance, porch and parking area are ideal for parents and bus drivers when dropping pupils off in the mornings, particularly in poor weather. The corridors and classroom doors are all wide enough for wheelchair usage. The current school footprint meets our needs with 8 classrooms, multipurpose hall, 2 personal care areas, bathrooms and offices. Natural light is everywhere and the abundance of windows allow pupils see what's going on indoors and outdoors. We believe that a new building would afford us the opportunity to further develop a separate identity for our second level pupils.

Our pupils deserve a more modern building, where we could accommodate all the recent advances in technology.

Site Description

Our school is located on a self-contained site of 2 acres, situated just off the Blackrock Road with an entrance from Park Avenue. Set in a mainly residential / recreational area, the School comprises 8 classrooms together with support nursing care facilities, a multi-purpose assembly hall, and office accommodation (Refer Appendix 2 – Green area). We share our site with Enable Ireland who up to their departure to a new site in Curraheen in 2019 housed their clinical support Team and included an indoor hydrotherapy swimming pool (Appendix 2 - Red area). The site is zoned for educational purposes only.

Sitting in the heart of Ballintemple Village with its shops and Post Office our school has convenient access to Pairc Ui Chaoimh, the Atlantic Pond, the Marina Walkway and the recently developed Community Park. CAB Motors have been our immediate neighbours for the last 40 years and have built a close caring relationship with the School in that time.

Legal Ownership

Today's School of the Divine Child is built on the original site of a private residence that was known as Lavanagh House. The School operates on a 99 Year Lease granted in 1972 with 50 years remaining. Such Leasehold legal structures were the norm of that time when constructing schools funded by the State, and the Trustees to the Lease are the National Association for Cerebral Palsy (Ireland) Ltd (since renamed Enable Ireland), the Catholic Bishop of Cork and Ross and the Minister for Education.

The cost of construction of the school in 1969 was £46,000 of which the records show that £6,670 was raised locally through a fundraising campaign spearheaded by the late Councillor Gus Healy. The balance was funded by a Capital Grant received from the Department of Education.

The Site's Potential

No doubt, a 2 acre site in the heart of Ballintemple carries significant financial value particularly with the further development of residential accommodation planned in the area over the next 5 years. Independent Auctioneers have advised that the school site would carry a value in the order of €2M in today's open market.

We have a vision, and are determined to ensure the very best school for our warrior pupils.

The vision of the School Board of Management however is not to “sell up and leave” but rather to “stay and develop” a new state of the art school facility on our site and within our Community for our warrior pupils. In addition to a new modern school with hydro-therapeutic pool facilities, we want to see the development of a suitable Training and Administration Centre where Teachers, Therapists and other school staff can be upskilled and can avail of support and training in dealing with children with disabilities. With developments in technology the need for, and the opportunities to be derived from developing an Assistive Technology Support Hub are immense.

The Perfect Time For A Win-Win

As our neighbourhood pushes forward with many exciting new plans, now is the time to start planning a brighter future. The challenge for School of the Divine Child and Enable Ireland is to release the true potential, financial and otherwise, of the Ballintemple site. Working together, this would be a win-win scenario for all parties.

"My teacher is great
and we read lots of
books together."



Our Story So Far

The School of the Divine Child has seen a fair few changes over the last 60 years, and with the help of our kind and compassionate community we have gone from strength to strength.



Timeline



1959

School of the Divine Child opens in Brown Street on the 12th of January. Just 16 students are enrolled.



1966



49 students attend the school which has moved to a bigger building in Grattan street.

Around this time Lavanagh House is purchased.



1969



The new school building is completed in the gardens of Lavanagh House, built around a symbolic sycamore tree.



1980



We attend weekly class swims in the newly opened hydrotherapy swimming pool.

Pupils attend hippotherapy in the stables attached to Lavanagh House.



1971

A new school curriculum is introduced for all primary schools including special schools.

This was replaced in 1999 by a revised curriculum.

From the mid 1970s, Our Lady of Apostle nuns, Ardfoyle provide accommodation for pupils attending the School.

1982

Two new classrooms open and two new teachers are appointed for the first time to include pupils with moderate learning abilities. Braille is introduced.

John Creedon, RTE and many of the staff of Cork Fire Brigade organise evening discos in the school hall throughout the 1980s.

1984

The school acquires its first desktop computers, and soon teachers are writing maths programmes for learning.



2000



Alumni Johnny Cronin and Tom Leahy win gold medals in Boccia at the Sydney Paralympic games in 2000.

1998

Education Act is published.

Minister for Education, Micheál Martin announces an automatic entitlement to resources for children with a special educational need. Following this announcement, 8 SNAs join the team here.

Today, 14 SNAs are employed by the School Board of Management.

2001



A music therapist is employed for the first time in the School.

Frances Cashman, a former pupil, publishes 'Bedtime Magic', the first of three books she releases as an author.

2004



The EPSEN Act is published.

The National Council for Special Education (NCSE) is established.

2008

The Special Education Support Service invites the school to partner with Maureen Gates, Boston College (USA) in training in the use of Camera Mouse technology.

2006



EU funding gives us an opportunity to partner with schools based in Poland, Hungary and Germany. We even learn some Polish, Hungarian and German words. Wunderbar! Students, Teachers and SNAs travel to Germany.



2016



The school hosts a colloquium on music technology.

Following intensive talks with Enable Ireland, the decision is made to stay on our current site in Ballintemple.



2019



The Arts Council announces we are a Creative School.



2021

We look forward to a promising future, and hope to continue to facilitate inclusive learning for our warrior pupils.



2020



We invite the Ombudsman to visit our school to ensure no pupil is ever left behind, and the needs of all of our children are met, both in terms of facilities and curriculum.



21st Century Education

Our classrooms will be as busy as classrooms in the 20th century but we know that for our pupils technology will help them in every way:

- Environmental controls will generate student autonomy.
- Power wheelchairs create independence.
- Touch button or eye gaze technology to open a range of interactive learning activities.

Curriculum Delivery

Our pupils present with a complex range of differing disabilities and medical needs. These include: Cerebral Palsy, Spina Bifida, Severe Scoliosis, CFC, Di George Syndrome, Down Syndrome, Pitt Hopkins Syndrome, Tracheostomy, Epilepsy, Global Developmental Delay, Mitochondrial Disorder, Glutaric Aciduria, Acquired Brain Injury, Diabetic Embryopathy, Rett Syndrome.

Communication and Language

50% of our pupils are non verbal. A total communication approach includes facial expression, body language, gesture, sign, sounds, symbols, written language, objects of reference, electronic aids. The Teacher's role will continue to be that of creator, provider and model to motivate communication.

Aistear and Wellbeing

- Learning through fun and play
- Pupils work together to solve problems in a thematic way - exploring space, going to the post office, learning about the garden.

Numeracy

Mathematics for life activities - time and how it matters in our day, shopping, voting in school elections, measuring for cookery, sharing and dividing.

How technology helps

A multi-sensory approach engaging as many senses as possible for stimulating effective learning experiences.

Each classroom has a touch sensitive, interactive whiteboard, touchscreen computer as well as iPads, laptops and a desktop computer. Eye gaze technology is used by many of our pupils.

Educational site licences are used to provide a platform for parents to access suitable learning for their children outside of school hours.

As well as using Soundbeam music technology, we are currently participating in a See, Hear, Play Project under the auspices of Enable Ireland with the support of Smurfit Kappa.

Because of the unique challenges our pupils face, our school does things a little differently.

Friends of the School

The work we do here would not be possible without the help and kindness of the community. It takes a village to raise a child, and there are a huge number of people who help to make the school the incredible resource it is for our pupils.

Board of Management Volunteers

- Chairpersons of the Board of Management since 1975 – Canon Walsh, Fr. O'Brien, Fr. White, Fr. O'Riordan, Canon O'Mathuna, Donal Cashman, Peadar McCann, Jim Hayes, Miriam Murphy and currently Dave Ronayne.
- Patron nominees: Anne Maxwell, Chris Roche, Parry O'Brien, Theresa Compagno, Sr. Mary John Staunton, Gillian Cantillon, Jim O'Shaughnessy, and currently Miriam Murphy.
- Parent Nominees, Eileen Marshall, Harry Varian, Jennifer Barriscale, Tom Pyke, Gillian Cantillon, Eileen O'Callaghan, Frank McCarthy, Nuala Bosonnet, Ruth Good, and currently Terry O'Neill and Colleen Worthington.
- Community Representatives: Mrs. O'Mahony, Ann Daly, Sr. Mary John Staunton, Jim Hayes, Theresa Compagno, and currently Kate Creedon and Jim O'Shaughnessy.
- Teacher nominees: Mary O'Hanlon, Eileen Hannigan, Margaret O'Connell, Aileen O'Sullivan, and currently Mary McAuliffe.

Partnerships

- Enable Ireland Cork and Dublin
- MTU School of Music and Students' Union
- UCC Special Education and Assistive Technology Centre
- Cork City Council for their provision of a large Christmas tree annually
- Douglas Community School, Ashton, Presentation Brothers, St. Angela's, The Ursulines, Beaumont Boys and Girls NS, Scoil Ursula, Crab Lane, OLA Ardfoyle
- Music Generation
- Creative Schools
- Cork Lifelong Learning Festival
- Muintir na Tíre

Expertise and voluntary input

- Novartis – staff and management who gave us our raised garden beds.
- Mainport – Dave, staff and management, who rescued our rockery, and built a super play area in the centre of our school.
- Biomarin – Kate, staff and management, who renovated our home economics, science, staffroom, and three classrooms over a period of three years.
- Dell – who paint our fences and tidy our garden.
- PC Systems – who mind our backs and ensure we have access to the best wifi.
- Niall, Mick and Justin of Niall Keely and Associates, Consulting Engineers, who always go the extra mile.
- CKT Solicitors
- Soroptimist Ireland (Cork Branch)
- Colin and the team in Totem for the advice and production of this document
- Garry Jones from theharmonicforge.com for the present of large scale cylindrical musical chimes and Cunningham's, Tallow.

Other volunteers

- The Staff and Management of SR Technics for hands on help, fundraising and Christmas parties.
- Officers and Management of Cork Prison – who have helped with annual Christmas party and gifts for our children for over 30 years.
- Joan Murphy for her gift of music.
- The owners and staff of the Post Office, Ballintemple Food Store and Longboats, who always help out with a smile.

It takes a village to raise a child, and there are a huge number of people who help to make the school the incredible resource it is for our pupils.



"I enjoy making lots of different things in my class."

Appendices



Appendix 1

Consultation – methodologies used

Methodology on consultation with our Teachers, parents and Pupils

The Board of Management decided in February 2021 that we should consult with our own school community to determine what were their views for the school in the medium and long term.

The reasoning for our consultation was:

- to further increase stakeholder interactions with the Board of Management on this important issue.
- to increase awareness of the options for the future of our School.
- to include as many voices as possible.
- to engage with the members of our community in a meaningful way in order to ascertain what they wanted for our school for the future.

Methodology

We initially considered a detailed questionnaire, but this would only be effective if all stakeholders knew the same background story e.g some of our teachers and parents were not part of the school when we had discussed the Curraheen option in 2015.

Staff

We concluded that Focus Group meetings, led by the Principal, would work best. The emphasis was to be on 'Shaping our Future' and staff members were asked about their vision for the school in 21st century.

We listed common questions for each focus group:

- Should we decide to stay in Ballintemple or move to a new School building in Curraheen?
- School of the Divine Child is one of 12 special schools in Cork - some of you have worked/had work experience/visited some or all of the other special schools - what is special/different about School of the Divine Child?

What can we do as a staff to improve the School?

- What can the Board of Management do to improve the School (wish list)?

The Deputy Principal and Principal met with two SNAs and one Teacher to 'test' the questions. The participants concluded that in the rest of the focus group meetings the question on school location would be flagged but participants would only be asked their opinion at the end of the meeting. All staff members were to be included (Total 26) and focus groups were divided so that Teachers and SNAs, young and old, male and female, experienced and newer to the job were, where possible, included in each group.

The Results:

All staff members voted to remain in Ballintemple. Those who had been present in 2016 stated that the decision made then had proved to be the right decision. Staff focus was on the individual education and care plans for pupils and the whole school approach to wellbeing and communication. Staff members reported that they are proud of the work they do. Blending learning with therapies is very beneficial for pupils. A lot has been learned from the pandemic where pupils were able to 'zoom' into classes and assemblies from home or hospital beds.

A summary document was prepared and sent out to all staff members for approval.

Parent Consultation

Two parents agreed to lead the preparations for the parent consultation. They met with the Principal and together they decided to call a number of parent meetings using Zoom. They met with the Principal in the second week in March and outlined how parents wanted to actively work with the school and saw a role for themselves in fundraising in particular for the reopening of the swimming pool. Together with the Principal they identified the need to reach out to all parents and how best to involve as many families as possible. It was agreed that using Aladdin to send out emails and texts followed by Zoom meetings would be an effective tool. In addition, it was agreed that Teachers would encourage parents to engage with the discussion.

Appendix 1

Consultation – methodologies used

Summary notes were sent out after each zoom meeting. Parents reluctant to attend online meetings were telephoned. Some contacted the school through email. Parents also spoke with each other privately and raised further questions. By the end of March 83% of parents had engaged with the consultation.

A summary document was prepared and sent out to all parents for approval.

Pupil Consultation

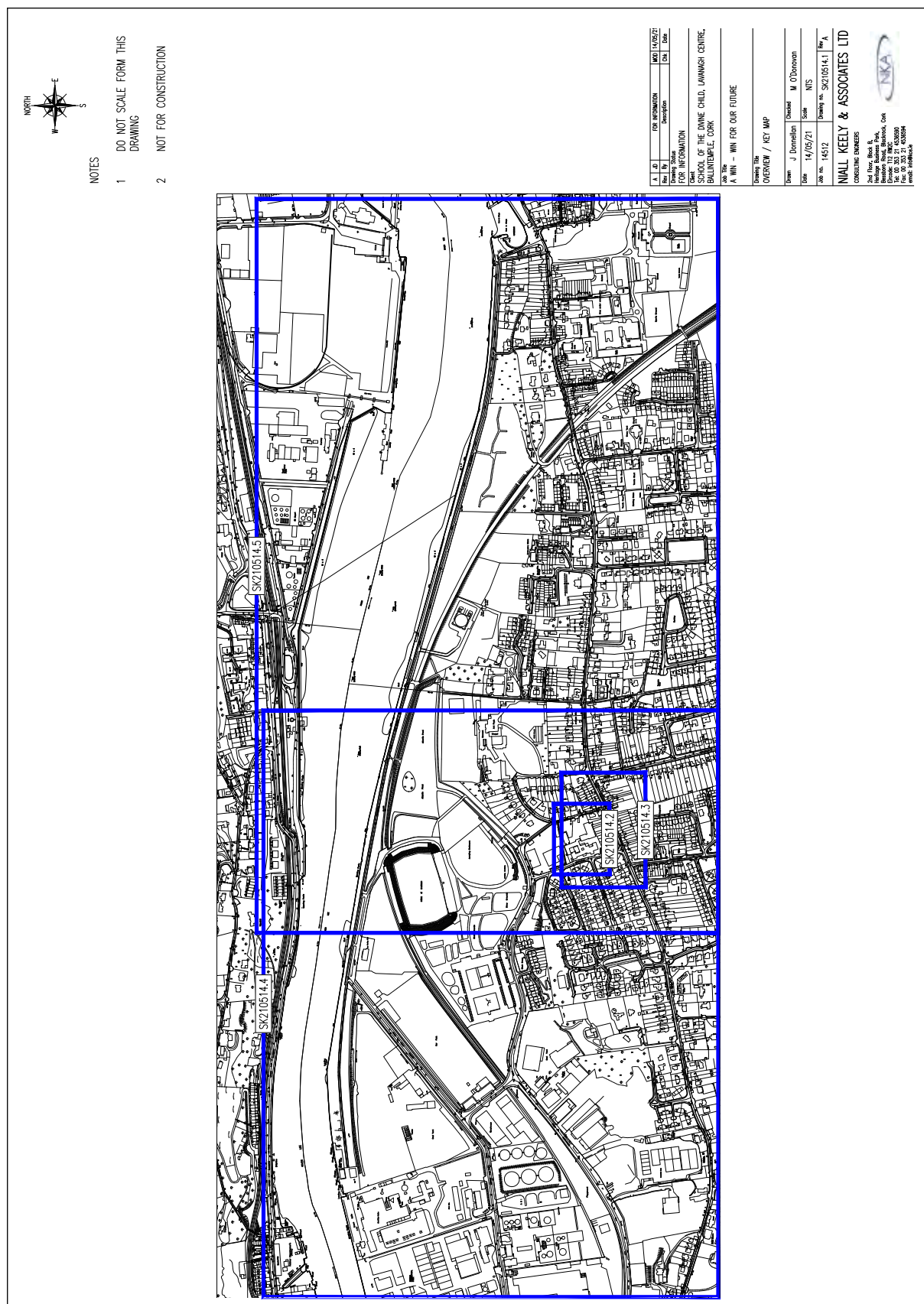
Class discussions take place daily in School of the Divine Child. Because of the enforced school closure in 2020, Teachers decided to focus on the student voice for this academic year. Teachers asked pupils their opinions and responses were summarised into one short document.

Board of Management

In leading this Consultation, Board members reflected on the many discussions held at Board level over the past 8 years, the visits to Curraheen and the examination of plans for a new School. The Board of Management acknowledges the generosity of Enable Ireland for inviting us to Curraheen and the sharing of information between the two organisations.

This report was researched and produced by the Board of Management – Dave Ronayne, Chair; Jim O'Shaughnessy, Hon. Treasurer; Miriam Murphy Wood; Colleen Worthington; Kate Creedon; Mary McAuliffe; Terry O'Neill and Patricia Harrington, Principal and with the assistance of Deputy Principal Mary O'Hanlon.

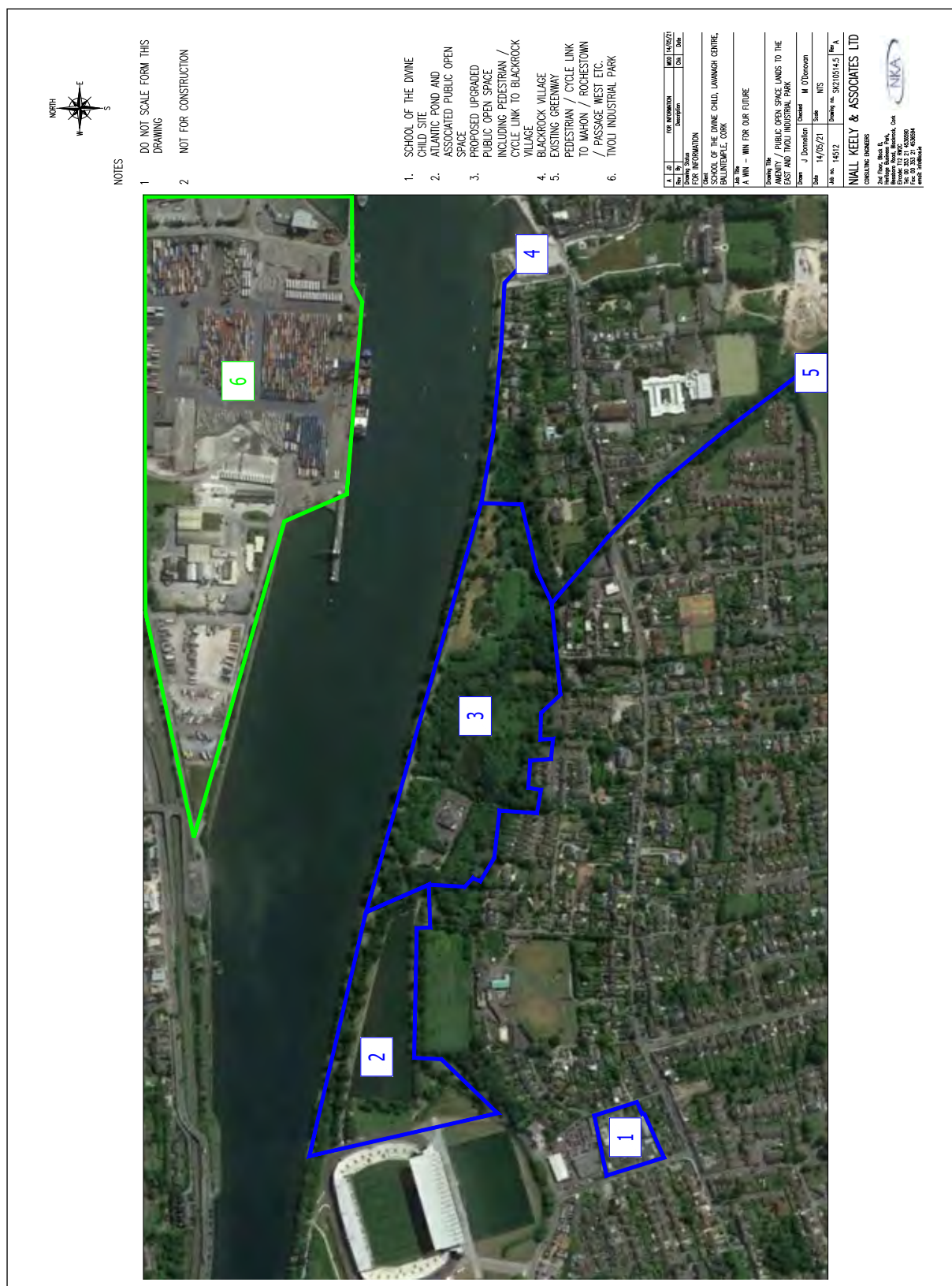
This map shows the larger area of Ballintemple and Marina, and illustrates the areas of 3 further google maps.



This map shows a larger area, and then showing new all weather pitch at Páirc Uí Chaoimh and 4 large sites that were all recently sold, with exciting plans announced for old Marque/Ford site.



This map shows the very large area that Cork City council have announced they will develop over the next few years; from existing Atlantic Pond to Blackrock village. And across the river is Tivoli docklands which is set to be transformed into a new small town when the port activities are transferred to Ringaskiddy over the next 2 years .





School of the Divine Child

Lavanagh Centre
Ballintemple, Cork

T: 021 4291804

E: Schoolofdivinechild@gmail.com

W: www.lavanagh.ie

SCHOOL ROLL NUMBER: 18483W | CHARITY NUMBER: 20201182